

EIKON®-LogicBuilder

Universally Understood Graphical Programming



Part of an AHU graphical program for VFD control using static pressure.

EIKON-LogicBuilder is the most advanced graphical programming tool in the industry. With the click of a button, you can build complex control algorithms, diagnose problems and run real-time or simulated operational data to evaluate the performance of a control sequence. EIKON-LogicBuilder makes it easy to understand control sequences as it does not use cryptic "line by line" computer code.

Key Features and Benefits

- Intuitive graphical programming tool eliminates the need for complex and cryptic computer code.
- "Live" graphic programs via a browser like Internet Explorer® provide "real-time" system analysis and a valuable trouble shooting tool.
- Powerful library of built-in microblocks (control functions) makes it easy to customize control sequences, whether simple or complex.
- Comprehensive library of pre-engineered graphic programs for all types of HV-ac equipment speeds programming.
- Universally understood graphical symbols are used for the microblock control library.
- Advanced "drag and drop" functionality – microblocks can easily be repositioned without having to redraw connections thanks to the smart "elastic-banding".
- "Label finder" makes it easy to see all program labels used for safety interlocks or networked variables.
- Flexible simulation mode enables the user to verify control sequences prior to system installation and commissioning.
- Comprehensive set of BACnet® objects for programming and compatibility with the ASHRAE BACnet protocol.
- Graphical program can easily be printed to generate instant project documentation.



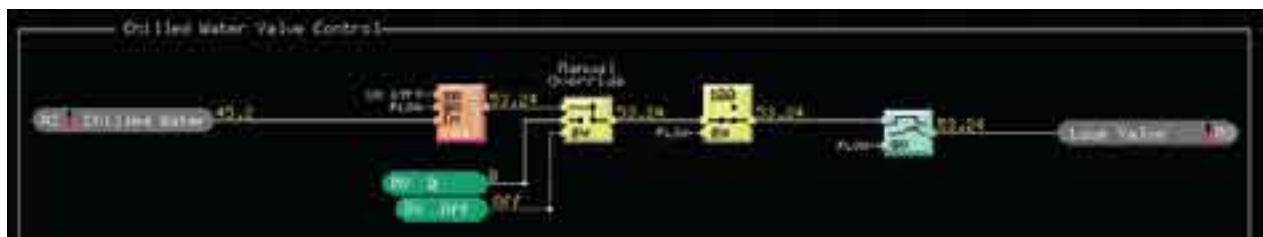
AUTOMATEDLOGIC

EIKON[®]-LogicBuilder

Created specifically for building control applications, EIKON-LogicBuilder offers sophisticated programming features to make your building operation simple and energy efficient. Our library of pre-engineered solutions comprises advanced control algorithms and can easily be tailored to your building's mechanical HV-ac systems, ensuring precise control and comfort.

Using a browser such as Internet Explorer, and with no special programming expertise, you'll be able to evaluate the "real-time" performance of your building systems, diagnose and quickly resolve problems.

EIKON-LogicBuilder offers a unique combination of power and simplicity.



A universally understood control loop constructed with EIKON-LogicBuilder graphical programming.

```
10 A=(TEMP;AI)-(PID;SP)
20 IF A<5 THEN 30 ELSE 80
30 IF A<-5 THEN 40 ELSE 80
40 (PID;PI)=0
50 (PID;PE)=0
60 (PID;RP)=(PID;DP)
70 GOTO 20
80 B=A*(PID;DP)/100
90 IF (PID;DP)>=100 THEN 120 ELSE 100
100 IF (PID;DP)<=0 THEN 120 ELSE 110
110 (PID;PI)=A+(PID;PE)/
2*(PID;IC)+(PID;PI)
120 C=(PID;PI)/100
130 (PIC;PE)=A
140 A=(PIC;RP)+B+C
150 IF A>=0 THEN 170 ELSE 160
160 A=0
170 IF A<=100 THEN 190 ELSE 180
180 A=100
190 IF (SAFETY;BV)==1 THEN 200 ELSE 210
200 A=0
210 (PID;DP)=A
220 SWAIT 1
230 GOTO 10
```

The equivalent control loop written in cryptic "line-by-line" computer code.